

\$398,888 - 78, 80 Galbraith Drive Sw, Calgary

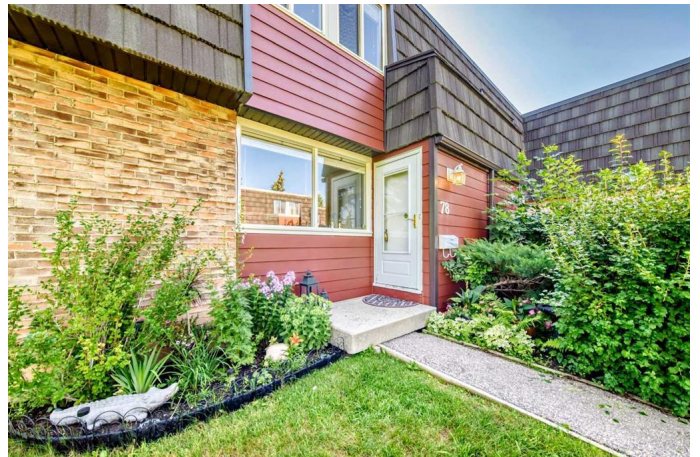
MLS® #A2242645

\$398,888

3 Bedroom, 2.00 Bathroom, 1,172 sqft
Residential on 0.00 Acres

Glamorgan, Calgary, Alberta

****OPEN HOUSES - SAT Aug 2 11 am-3 pm & SUN Aug 3 11 am -2 pm**** Welcome to Glenmore on the Parc, a well-maintained complex, where you will find unit #78, an updated end-unit townhome right next to the park offering over 1,500 sq ft of updated living space, with 3 bedrooms, 1.5 bathrooms, and a fully developed basement. This home backs directly onto Galbraith Park and is within walking distance to Mount Royal University, schools, transit, and endless amenities. Step inside to a sunny main floor where newer flooring flows through the living room, dining room, and kitchen. A large window fills the kitchen space with natural light, while the updated trendy kitchen features refreshed white cabinetry, appealing backsplash, and a full stainless steel appliance package. A convenient 2 piece bathroom and access to your private, fully enclosed backyard sanctuary make the main level ideal for everyday living. Upstairs, you'll find 3 spacious bedrooms, including a large primary bedroom with spacious walk in closet. Rounding out the top level you will find a 4 piece bathroom with soaker tub. The fully finished basement offers even more value, with a large recreation room, storage and laundry. The corner unit lot offers plenty of privacy and is surrounded by lush grass & landscaping "maintained by the condo board! Additional features include an assigned parking stall, close proximity to green space, playgrounds, and walking paths. Whether you're a first-time buyer, young



professional, or investor, this move-in-ready home offers unbeatable value and prime location within the complex, and the City! Donâ€™t miss this rare opportunity, book your showing today!

Built in 1971

Essential Information

MLS® #	A2242645
Price	\$398,888
Bedrooms	3
Bathrooms	2.00
Full Baths	1
Half Baths	1
Square Footage	1,172
Acres	0.00
Year Built	1971
Type	Residential
Sub-Type	Row/Townhouse
Style	2 Storey
Status	Active

Community Information

Address	78, 80 Galbraith Drive Sw
Subdivision	Glamorgan
City	Calgary
County	Calgary
Province	Alberta
Postal Code	T3E 4Z6

Amenities

Amenities	Park, Parking, Playground, Visitor Parking
Parking Spaces	1
Parking	Stall

Interior

Interior Features	Built-in Features, Ceiling Fan(s), Closet Organizers, Storage, Walk-In Closet(s)
-------------------	--

Appliances	Dishwasher, Dryer, Microwave, Range Hood, Refrigerator, Stove(s), Washer
Heating	Forced Air
Cooling	None
Has Basement	Yes
Basement	Finished, Full

Exterior

Exterior Features	Courtyard, Lighting, Other, Private Yard, Storage
Lot Description	Corner Lot, Low Maintenance Landscape, Other
Roof	Tar/Gravel
Construction	Brick, Vinyl Siding, Wood Frame
Foundation	Poured Concrete

Additional Information

Date Listed	July 30th, 2025
Days on Market	2
Zoning	M-C1 d54

Listing Details

Listing Office	eXp Realty
----------------	------------

Data is supplied by Pillar 9â„¢ MLS® System. Pillar 9â„¢ is the owner of the copyright in its MLS® System. Data is deemed reliable but is not guaranteed accurate by Pillar 9â„¢. The trademarks MLS®, Multiple Listing Service® and the associated logos are owned by The Canadian Real Estate Association (CREA) and identify the quality of services provided by real estate professionals who are members of CREA. Used under license.