

\$399,000 - 2006, 615 6 Avenue Se, Calgary

MLS® #A2232421

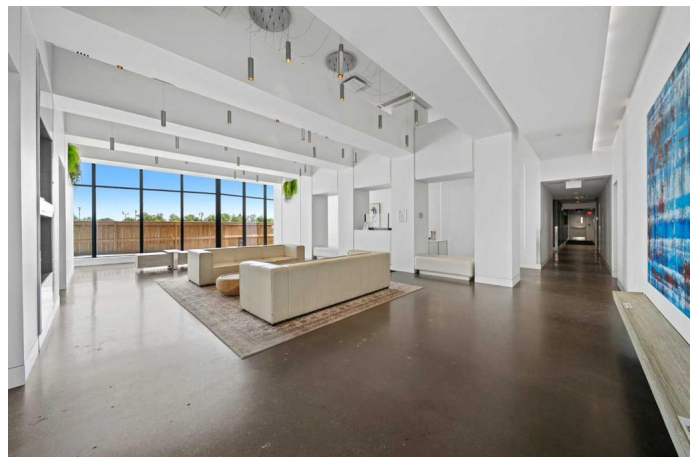
\$399,000

1 Bedroom, 1.00 Bathroom, 594 sqft

Residential on 0.00 Acres

Downtown East Village, Calgary, Alberta

Welcome to Unit 2006 at The Verve, a 20th-floor 1-bedroom plus den residence offering bright east-facing Bow River views in the heart of East Village. With 593.7 sqft of thoughtfully designed interior space, this high-floor unit combines natural light, efficient layout, and concrete construction to create a private, comfortable urban home. The modern kitchen features quartz countertops, full-height cabinetry, stainless steel appliances, and a sleek island that flows into the open-concept living and dining area. Floor-to-ceiling windows frame the morning skyline, while the private balcony offers unobstructed views over East Village rooftops and city landmarks. The primary bedroom includes generous closet space and natural light, while the separate den is perfect for a home office, reading nook, or guest area. A full 4-piece bathroom, stacked laundry, and multiple closets provide convenience and function. This unit includes a titled underground parking stall and access to a wide range of premium building amenities: 24-hour concierge, fully equipped fitness centre, rooftop lounge with river views, guest suite, bike storage, and resident social spaces. The Verve is one of East Village's most sought-after towers, developed by FRAM+Slokker with quality concrete construction and professional management. Steps from RiverWalk, Superstore, Central Library, Studio Bell, CTrain, coffee shops, and more, this location is ideal for urban professionals, first-time buyers, and investors



alike. With low condo fees and strong rental demand in the area, this home also makes an excellent holding property. East-facing units are prized for their natural morning light, quieter exposure, and energy efficiency, while high-floor positioning enhances resale value and owner enjoyment. Immediate possession is available. This is your opportunity to own a stylish and functional high-rise condo in one of Calgary’s fastest-growing downtown districts.

Built in 2019

Essential Information

MLS® #	A2232421
Price	\$399,000
Bedrooms	1
Bathrooms	1.00
Full Baths	1
Square Footage	594
Acres	0.00
Year Built	2019
Type	Residential
Sub-Type	Apartment
Style	Single Level Unit
Status	Active

Community Information

Address	2006, 615 6 Avenue Se
Subdivision	Downtown East Village
City	Calgary
County	Calgary
Province	Alberta
Postal Code	T2G 1S2

Amenities

Amenities	Bicycle Storage, Community Gardens, Elevator(s), Fitness Center, Guest Suite, Other, Parking, Party Room, Picnic Area, Recreation Facilities, Roof Deck, Secured Parking, Storage, Trash, Visitor Parking,
-----------	------------------------------------------------------------------------------------------------------------------------------------------------------------------------------------------------------------

	Spa/Hot Tub
Parking Spaces	1
Parking	Titled, Underground

Interior

Interior Features	Breakfast Bar, Closet Organizers, Kitchen Island, No Animal Home, No Smoking Home, Open Floorplan, Quartz Counters, Recessed Lighting, Soaking Tub, Storage, Recreation Facilities
Appliances	Built-In Oven, Built-In Refrigerator, Dryer, Microwave, Range Hood, Washer, Window Coverings, Electric Cooktop
Heating	Fan Coil
Cooling	Central Air
# of Stories	25

Exterior

Exterior Features	Balcony, BBQ gas line, Courtyard, Outdoor Grill, Playground, Barbecue
Construction	Concrete

Additional Information

Date Listed	June 18th, 2025
Days on Market	15
Zoning	CC-EPR

Listing Details

Listing Office	Homecare Realty Ltd.
----------------	----------------------

Data is supplied by Pillar 9â„¢ MLSÂ® System. Pillar 9â„¢ is the owner of the copyright in its MLSÂ® System. Data is deemed reliable but is not guaranteed accurate by Pillar 9â„¢. The trademarks MLSÂ®, Multiple Listing ServiceÂ® and the associated logos are owned by The Canadian Real Estate Association (CREA) and identify the quality of services provided by real estate professionals who are members of CREA. Used under license.