

\$529,900 - 138 Appleburn Close Se, Calgary

MLS® #A2205302

\$529,900

3 Bedroom, 3.00 Bathroom, 1,204 sqft

Residential on 0.08 Acres

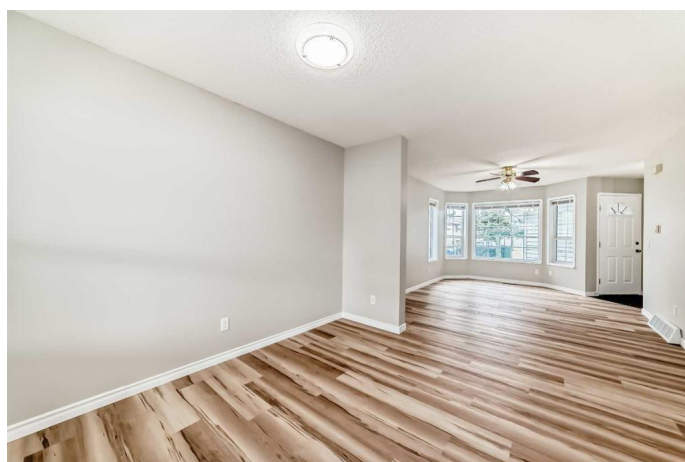
Applewood Park, Calgary, Alberta

Open House on Saturday March 29 from 2pm to 4pm to public. Welcome to this beautifully renovated 2-story home in Applewood Park!

Featuring a double-attached garage, this home has been completely updated with a brand-new roof, fresh paint, and stunning new flooring throughout the main and second levels. The main floor includes a convenient new washer and dryer, located near the 2-piece bathroom. The kitchen is a true highlight, with brand-new appliances (stove, hood fan, dishwasher, fridge) and a corner pantry for extra storage.

Upstairs, you'll find a spacious master bedroom with a walk-in closet, two additional bedrooms, and a 4-piece bathroom, all with new vinyl plank flooring. The fully finished basement offers a large recreation room, a versatile flex room, and a 3-piece bathroom—perfect for entertaining or extra living space.

Step outside to the large 11'6" Ã— 21'7" deck and fully fenced yard, ideal for summer gatherings. This home offers modern updates and ample space, with quick access to Stoney Trail, Deerfoot Trail, and East Hills Shopping Center (including Costco). Don't miss out—book your showing today!



Built in 1996

Essential Information

MLS® #

A2205302

Price	\$529,900
Bedrooms	3
Bathrooms	3.00
Full Baths	2
Half Baths	1
Square Footage	1,204
Acres	0.08
Year Built	1996
Type	Residential
Sub-Type	Detached
Style	2 Storey
Status	Active

Community Information

Address	138 Appleburn Close Se
Subdivision	Applewood Park
City	Calgary
County	Calgary
Province	Alberta
Postal Code	T2A 7T6

Amenities

Parking Spaces	2
Parking	Double Garage Attached
# of Garages	1

Interior

Interior Features	Open Floorplan, Pantry, Walk-In Closet(s)
Appliances	Dishwasher, Dryer, Electric Stove, Garage Control(s), Range Hood, Refrigerator, Washer, Window Coverings
Heating	Forced Air, Natural Gas
Cooling	None
Has Basement	Yes
Basement	Finished, Full

Exterior

Exterior Features	Playground
Lot Description	Back Yard, Rectangular Lot, See Remarks
Roof	Asphalt Shingle

Construction	Wood Frame
Foundation	Poured Concrete

Additional Information

Date Listed	March 27th, 2025
Days on Market	40
Zoning	R-CG

Listing Details

Listing Office	RE/MAX Real Estate (Central)
----------------	------------------------------

Data is supplied by Pillar 9â„¢ MLS® System. Pillar 9â„¢ is the owner of the copyright in its MLS® System. Data is deemed reliable but is not guaranteed accurate by Pillar 9â„¢. The trademarks MLS®, Multiple Listing Service® and the associated logos are owned by The Canadian Real Estate Association (CREA) and identify the quality of services provided by real estate professionals who are members of CREA. Used under license.