

# \$499,900 - 20 Tararidge Close Ne, Calgary

MLS® #A2200674

**\$499,900**

3 Bedroom, 2.00 Bathroom, 910 sqft

Residential on 0.06 Acres

Taradale, Calgary, Alberta

Fully renovated 4 level split with over 1800 sq ft of developed space. Updates in this home include all flooring, both bathrooms, kitchen cabinets, quartz countertop, baseboards, interior doors, door casings, furnace, custom blinds, paint and roof shingles. When you first enter the home you will love how open and bright it is thanks to the east facing bay window at the front. The living room offers hardwood flooring and is an ideal size for entertaining or a young family. The kitchen offers contemporary cabinets, quartz counter top, hardwood flooring, stainless steel appliances and a side entrance. The upper level offers 3 good size bedrooms. The side entrance could easily be walled off for direct access to the 3rd and 4th level. The 3rd level family room is 17x24 with 2 good sized windows, updated carpet and a brick faced fireplace. The 4th level has a renovated 3pc bathroom, walk in closet and over 430 sq ft of space. There is a 19x19 double garage, paved alley, concrete patio, fully fenced and close to public transport. This one won't last long, don't delay.

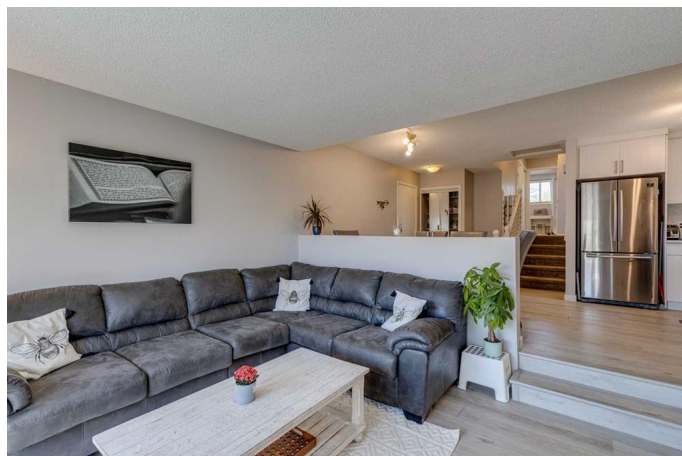
Built in 1984

## Essential Information

MLS® # A2200674

Price \$499,900

Bedrooms 3



|                |               |
|----------------|---------------|
| Bathrooms      | 2.00          |
| Full Baths     | 2             |
| Square Footage | 910           |
| Acres          | 0.06          |
| Year Built     | 1984          |
| Type           | Residential   |
| Sub-Type       | Detached      |
| Style          | 4 Level Split |
| Status         | Active        |

### Community Information

|             |                       |
|-------------|-----------------------|
| Address     | 20 Tararidge Close Ne |
| Subdivision | Taradale              |
| City        | Calgary               |
| County      | Calgary               |
| Province    | Alberta               |
| Postal Code | T3J2P7                |

### Amenities

|                |  |
|----------------|--|
| Parking Spaces | 2  |
| Parking        | Alley Access, Double Garage Detached, Garage Door Opener, Asphalt, Garage Faces Rear |
| # of Garages   | 2  |

### Interior

|                   |   |
|-------------------|---|
| Interior Features | High Ceilings, Open Floorplan, Storage                                |
| Appliances        | Dishwasher, Dryer, Garage Control(s), Gas Stove, Refrigerator, Washer |
| Heating           | Forced Air, Natural Gas   |
| Cooling           | None  |
| Fireplace         | Yes   |
| # of Fireplaces   | 1   |
| Fireplaces        | Wood Burning, Brick Facing, Family Room                               |
| Has Basement      | Yes   |
| Basement          | Finished, Full  |

### Exterior

|                   |   |
|-------------------|---|
| Exterior Features | Private Yard, Storage   |
| Lot Description   | Back Lane, Back Yard, Front Yard, Landscaped, City Lot, Level |
| Roof              | Asphalt Shingle   |

|              |                          |
|--------------|--------------------------|
| Construction | Vinyl Siding, Wood Frame |
| Foundation   | Poured Concrete          |

**Additional Information**

|                |                  |
|----------------|------------------|
| Date Listed    | March 12th, 2025 |
| Days on Market | 56               |
| Zoning         | R-G              |

**Listing Details**

|                |                        |
|----------------|------------------------|
| Listing Office | MaxWell Capital Realty |
|----------------|------------------------|

Data is supplied by Pillar 9â„¢ MLS® System. Pillar 9â„¢ is the owner of the copyright in its MLS® System. Data is deemed reliable but is not guaranteed accurate by Pillar 9â„¢. The trademarks MLS®, Multiple Listing Service® and the associated logos are owned by The Canadian Real Estate Association (CREA) and identify the quality of services provided by real estate professionals who are members of CREA. Used under license.